



CLASS: VII

DATE: 21.05.2024

MAX MARKS: 20 Marks

TIME: 40 MINUTES

General Instructions:

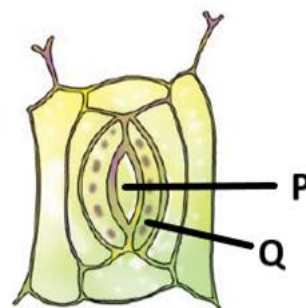
- This question paper consists of 10 questions.
- **Section A** consists of 6 objective-type questions carrying 1 mark each.
- **Section B** consists of one very short question carrying 2 marks, one short answer type question carrying 3 marks, and one long answer type question carrying 5 marks.
- **Section C** consists of a case-based unit of assessment of 4 marks with sub-parts

SECTION A

Select and write one most appropriate option out of the four options given for each of the following questions 1 to 6.

1. The equation given below represents photosynthesis: 1
$$X + \text{Water} \rightarrow \text{Carbohydrate} + Y$$

Which of the following is represented by X and Y in the given equation?
a) X- carbon dioxide; Y- oxygen.
b) X – carbon dioxide; Y- hydrogen.
c) X- oxygen; Y- carbon dioxide.
d) X- carbon; Y- oxygen.
2. Which of the following is true about saprotrophs? 1
a) They trap insects to meet their nitrogen requirement.
b) They share their food and shelter.
c) They live on decaying organic matter.
d) They contain chlorophyll
3. The finger-like outgrowths of human intestine are 1
a) gall bladder that stores bile juice.
b) villi that help to absorb the digested food.
c) liver that secretes bile juice.
d) pancreas that digests the fatty food substances.
4. Observe the diagram given below and label the marked parts P & Q 1
a) P - Stomatal opening, Q - Epidermal cell
b) P - Cell membrane, Q - Guard cell
c) P - Cytoplasm, Q - Stomatal opening
d) P - Stomatal opening, Q - Guard cells



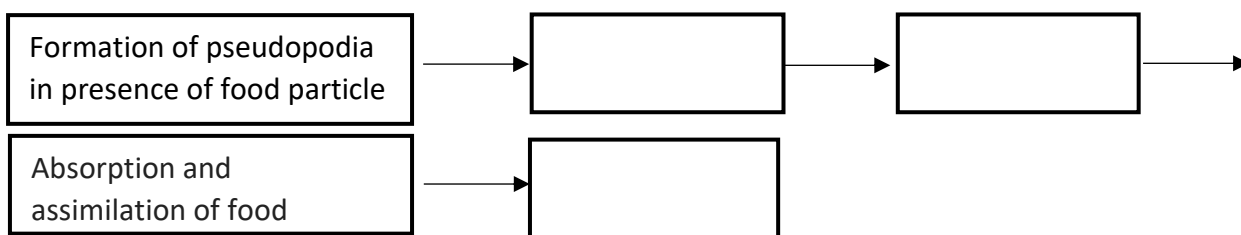
Assertion Reason:

5. **Assertion (A):** Ruminants can digest the grass rich in cellulose. 1
Reason (R): Ruminants have cellulose-digesting bacteria in their stomach.
a) Both A and R are true and R is the correct explanation of A.
b) Both A and R are true but R is not the correct explanation of A.
c) A is true but R is false.
d) A is false but R is true.

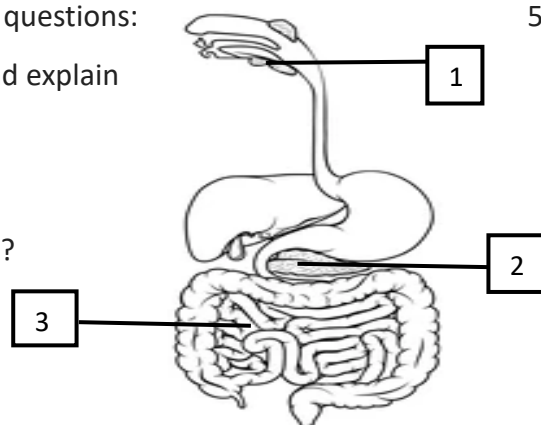
6. **Assertion (A):** The first set of teeth grow during infancy(babyhood) are milk teeth. 1
Reason (R): The second set of teeth grow in place of milk teeth.
 a) Both A and R are true and R is the correct explanation of A.
 b) Both A and R are true but R is not the correct explanation of A.
 c) A is true but R is false.
 d) A is false but R is true.

SECTION B

- 7 a. Cuscuta, categorized as a parasite. Give reason. 1
 b. How do fungi and algae in lichens benefit from each other? 1
8. Complete the process of digestion in Amoeba shown in flow chart 3



9. Observe the given diagram below and answer the following questions: 5
- a) Name the glands labeled 1 and 2 in the given diagram and explain their functions.
 b) Identify the organ where protein digestion starts.
 c) What is the function of the labeled area 3 in the diagram?



SECTION C

10. Megha returned from school and found that her neighbour Rani was talking to her grandmother about her son passing watery stools frequently. Grandmother suggested Rani to give her son a solution of sugar and salt in clean water, many times a day for fast recovery. Megha was surprised. She rushed to her grandmother and asked the scientific reason for it. Her grandmother smiled and explained her the importance of this solution. 4
- a) What are the causes for the above condition of Rani's son? (Any two)
 b) Name the term used to describe the above condition of Rani's son.
 c) What is the name of the solution prepared with sugar and salt dissolved in water?
- Or**
- c) Why is solution of sugar and salt given to a person suffering from this condition?
